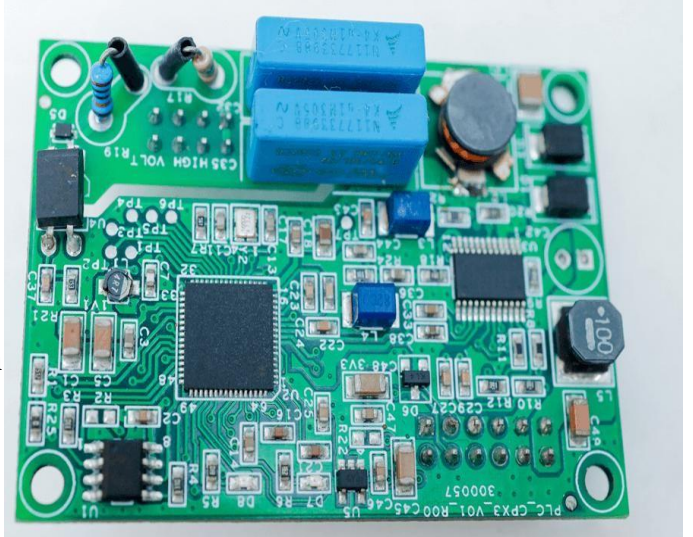


Narrow Band PLCC Mesh Communication Module

FEATURES

- Populated with the Renesas Electronics, CPX3 controller.
- AMI UART (9600 Baud rate) for meter to PLCC communication
- Debug UART (115200 Baud Rate) for flashing and configuration
- OFDM is the basic principle of PLC modulation.
- PHY is designed to provide high data rate communication.
- Data rates vary from 50 kbps up to 800 kbps.
- Applicable to single phase meters
- Boot 0 pin for enable flash mode
- Input operating voltage 5 V, 12 V.



TECHNICAL DETAILS

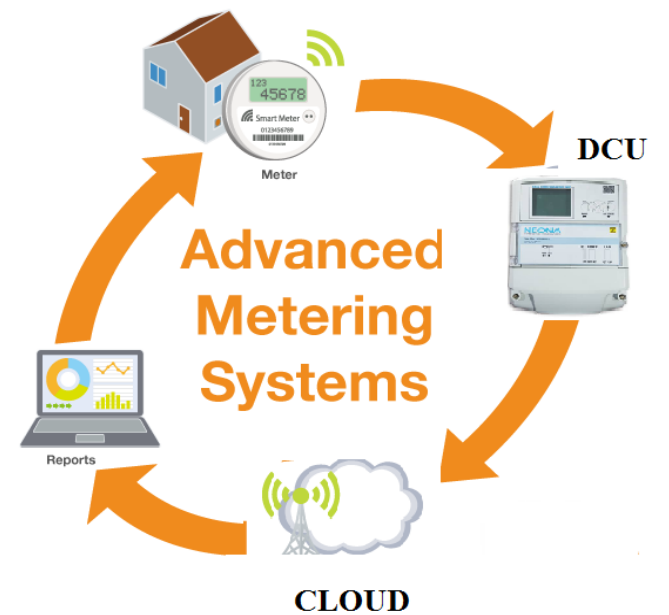
- G3 Supported band plans (CENELEC – A / ARIB / FCC)
- PRIME 1.3.6 & PRIME .4
- Support CSMA / CA Protocol
- 500Khz Gain Receiver & Transmit
- 128 – bit AES encryption and decryption
- DSP Software Protection
- Low power operation



Narrow Band PLCC Mesh Communication Module

APPLICATIONS

- Point-Point and Point-to-Multi Point Applications
- Smart metering and Smart city
- Utility AMR/AMI Network for Electricity, Gas, Water Meters etc..
- Automatic Street Light Control
- Home Automation Systems



PHYSICAL SPECIFICATIONS

Mechanical Dimension - (L) 63.5 mm x (W) 42 mm

ENVIRONMENTAL SPECIFICATIONS

Operating Temperature Range -40 deg C to +85 deg C

